

Search...

Click...

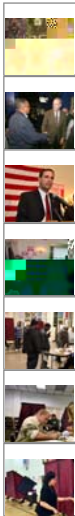
Click here for links to election results in Atlantic, Cape May, Cumberland and Ocean counties

[Previous](#) [Next](#)



Edward Lea

Democratic Sen. Jim Whelan speaks after winning his race against challenger Vince Polistina during election night party at Tun Tavern in Atlantic City Tuesday, Nov 8, 2011.



Posted: Tuesday, November 8, 2011 10:30 pm | Updated: 7:26 am, Wed Nov 9, 2011.

By DEREK HARPER and DIANE D'AMICO, Press Staff Writer |

After a bruising campaign, voters returned Jim Whelan to the state Senate in the 2nd Legislative District on Tuesday.

Polistina conceded at around 10:20 p.m.

Democrat Whelan garnered 53 percent of the vote to Republican Polistina's 46 percent.

Meanwhile, in the 1st District, incumbent Democrat state Senator Jeff Van Drew narrowly defeated Republican challenger David DeWeese. With 100 percent of the vote counted, Van Drew had won 51 percent to DeWeese's 48 percent.

Whelan, speaking at his election headquarters in Atlantic City's Tun Tavern, said the night was "bittersweet" because of the other Democratic losses around the county.

As he thanked people for their support, Whelan prepared them for more work.

"We have a challenge ahead of us in the next several years," Whelan said. "We know that our area we know that the national economy is bad, we know that New Jersey is worse and that our area is particularly hit hard."

He said that everyone, from the chairman on down, would have to work together for solutions in the coming years.

In the 2nd District Assembly race, Republicans John Amodeo (29 percent) and newcomer Chris Brown (26 percent) defeated Democrats Damon Tyner (23 percent) and Alisa Cooper (20 percent).

In the 1st District Assembly race, Democrat incumbents Nelson Albano (28 percent) and Matt Milam (25 percent) defeated Republican challengers Sam Fiocchi (23 percent) and Suzanne Walters (also 23 percent).

With no high-profile president or governor to vote for, voter turnout in South Jersey was reported as steady, but fairly light at polling places in Atlantic, Cape May, Cumberland southern Ocean counties.

Election results

- 1st District Senate and Assembly
- 2nd District Senate and Assembly
- 9th District Senate and Assembly
- Atlantic County/ Countywide and municipal
- Cape May County/ Countywide and municipal



Add a comment...

Post to Facebook

Posting as Corrine Wilsey (Not you?)

[Comment](#)



Matt Waldman · Works at State of New Jersey

I'm just glad the terrible commercials are over, both sides ripping on eachother..and after all of that I doubt anyone knows what they actually stand for.

[Reply](#) · [5](#) · [Like](#) · [Follow Post](#) · 14 hours ago



Melissa Morgan O'Donnell · Top Commenter

Glad Whelan won. I couldn't wait to get to the booth and cast my vote against Polistina. I would have voted against Polistina 10x if I could've just for having to listen to his retarded commercials over and over

Facebook social plugin

