

Faculty Senate Task Force on University Status  
Survey of Faculty February 2013

The Faculty Senate Task Force on University Status asked faculty to complete an internet survey about the possibility of the college transitioning to university status. The committee emailed faculty during the second and third weeks of January. The committee received 248 responses. Fifty were at the college for 03 years, 28 for 4 years, 33 for 7 years, 38 for 10 years, 17 for 12 years, and 38 for at least 21 years. Most of the survey included questions that included answer options on a five-point likert-type scale with 1 = very negative, 2 = somewhat negative, 3 = no difference, 4 = somewhat positive, and 5 = very positive.

U v ñ A À Ç % } • ] š ] À X Z • % } v v š • Á Ç o • } o š } v • Á

potential undergraduate class size. Of all of the questions asked, undergraduate class size had the lowest mean, with 2.85.

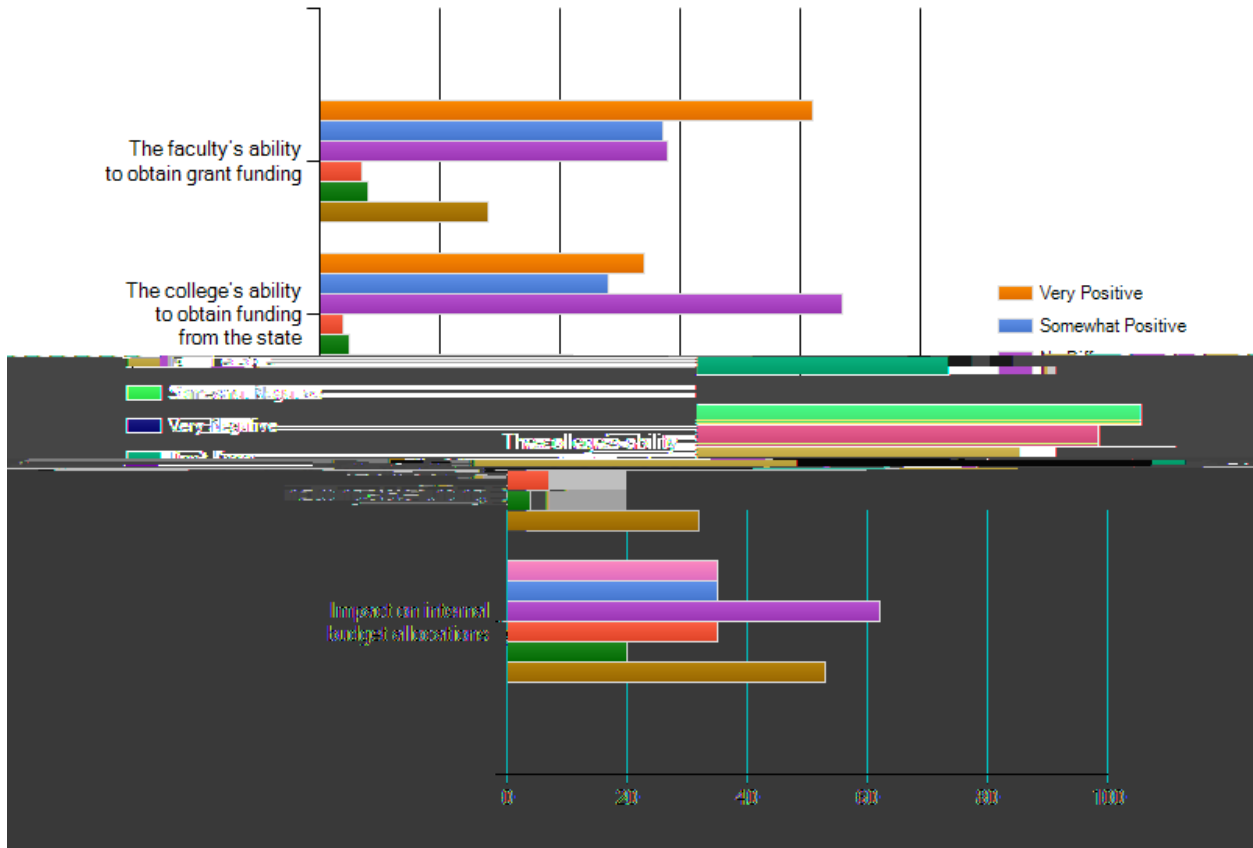
*Graduate education*

& μ o š Ç • u } % š ] u ] • š ] } μ š š Z } o o P { t u d e n t s i n f a c u l t y r e s e a r c h o Æ P O E μ  
v } μ š • š μ v š • [ u % o } Ç ] o ] š Ç





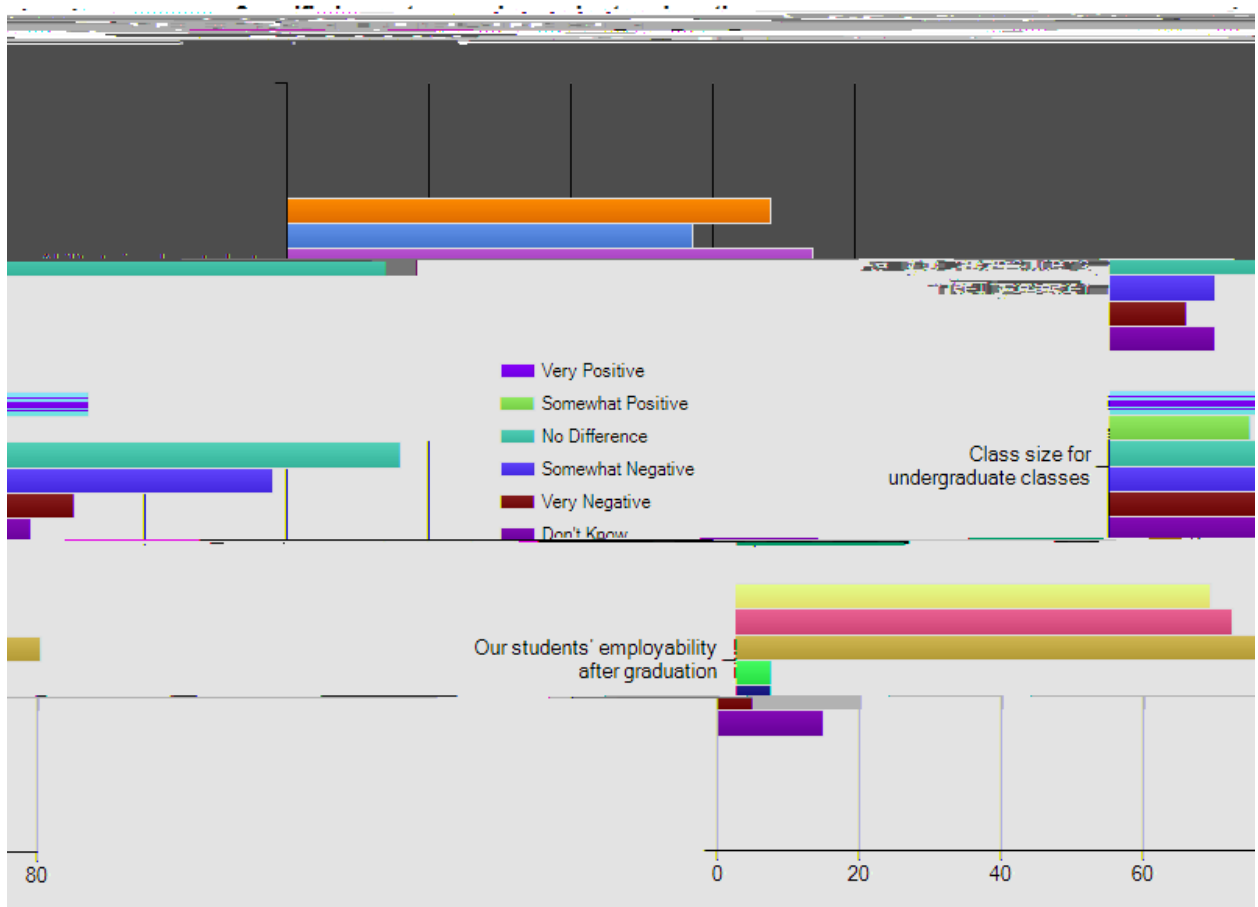
### Finances



Æ

	Mode	Mean	SD
The faculty's ability to obtain grant funding	5	3.94	1.068
The college's ability to obtain funding from the state	3	3.73	.956
The college's ability to fundraise (not including state funding)	5	3.97	.972
Impact on internal budget allocations	3	3.17	1.242





*AE*

	Mode	Mean	SD
Ability to involve students in faculty research	3	3.70	1.117
Class size for undergraduate classes	3	2.85	1.220
Our students' employability after graduation	3	3.84	.959





of service

	0-6	7-15	16-20	21+	Total
Yes	41 (65%)	35 (49%)	11 (65%)	16 (42%)	103 (55%)
No	7 (11%)	14 (20%)	4 (24%)	14 (37%)	7 (21%)
}v[š Iv}Á	15 (24%)	22 (31%)	2 (12%)	8 (21%)	47 (25%)

